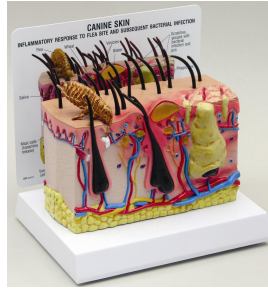


Copy and Route To: _____



Lake Forest Anatomicals, Inc.

Specialists in Quality Veterinary Anatomical Charts and Models

1400 S. Skokie Hwy, Suite #1005

Remit to: P.O. Box 503 Lake Forest, IL 60045 USA

Tel: 847-234-7367 Fax: 847-234-3559

E-mail: mail@lakeforestanatomicals.com

Website: www.lakeforestanatomicals.com

2011 Veterinary Anatomical Catalog

Hello! We are **Lake Forest Anatomicals** offering a broad line of high-quality anatomical charts and models for **Veterinary Medicine, Research and Education**. Our **Veterinary Models** include complete composite plastic or **REAL BONE** canine and feline skeletons, canine and feline jaws, canine heart with heartworm, knee, ear, pelvis, etc., plus a complete Equine Anatomical Poster Series.

NEW Feline and Canine Anatomical Models

We are pleased to announce the addition of five **New Veterinary Models** for 2011 including three new Feline Models never before available:

LFA #9090 Canine Skin Model with Flea

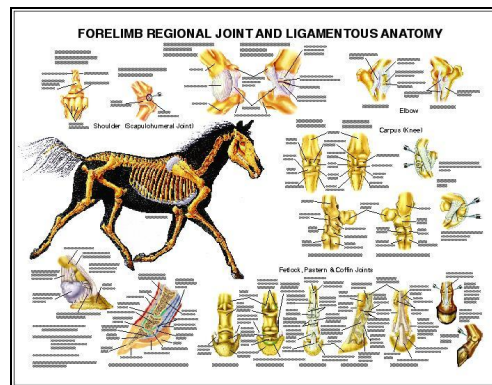
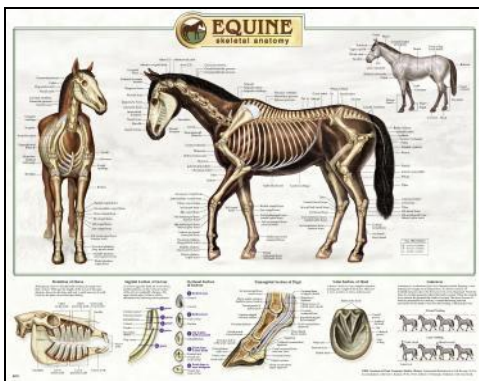
LFA #9141 Feline Heart/Lung

LFA #9151 Canine Heart/Lung Model

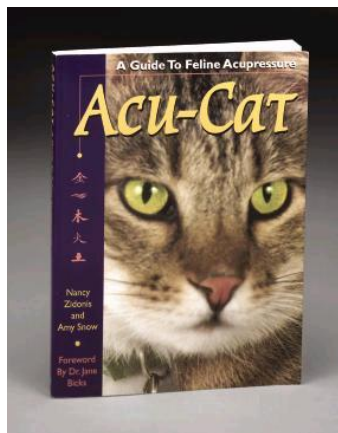
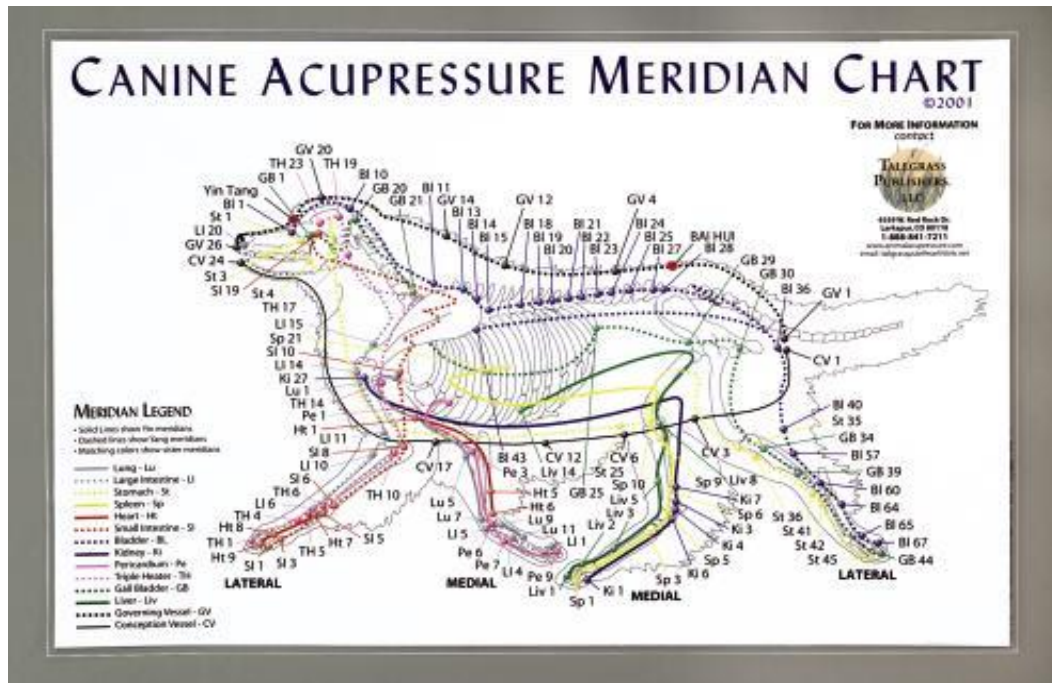
LFA #9160 Feline Pelvis (Hip)

LFA #9170 Feline Shoulder

Our **Veterinary Wall Charts** include Canine, Feline, and Bovine skeletal, muscular and internal organ systems, and the acclaimed complete series of Equine Anatomy charts.



All of our charts and anatomical models are medically accurate and ideal for professional veterinary practice, breeders, animal shelters, pet-owner training centers, etc. Made of durable composite plastic, each anatomical model is a colorful three-dimensional model suitable for student or pet owner education, procedural demonstration and anatomical studies.



We also stock a complete line of **Tall Grass Institute (tm)** veterinary acupressure charts, models, CD's and manuals to support the growing application of acupuncture/acupressure methods for animal health and wellbeing.

Order directly online and SAVE 5% on each order!

Order online and save! Simply visit our webstore at www.lakeforestanatomicals.com to view our complete line of veterinary charts and models and order online. Safe and secure. Use **Coupon Code** displayed on Home Page for your 5% discount.

Please save our webstore address for future reference. Or, you may use our convenient **Fax Back Order Form** attached for fax ordering. No contract required. Professional or institutional purchase orders accepted for Net 30 days billing.

Canadian and International Buyers welcome! We accept VISA, MasterCard, American Express, and Paypal (E-Bay). If preferred, you may call, write or email us to complete a credit card transaction. Will ship within 48 hours of receipt of Purchase Order or payment.

Please let us know if you have any questions.

Sincerely, Lake Forest Anatomicals, Inc. © 2011 Lake Forest Anatomicals

Dedicated to Animal Health and Well-being

Member: Lake Forest (Illinois) Chamber of Commerce and other professional associations.

Note: This catalog represents only a portion of our complete line of Veterinary Anatomical models, wall charts and related products available from Lake Forest Anatomicals, Inc. Please visit our webstore at www.lakeforestanatomicals.com to view the complete line. Order directly online and Save!

Veterinary Anatomical Charts and Models



LFA #9050 Canine Knee

Average size canine knee with femur, fibula, patella and tibia bones; lateral and medial meniscus, anterior and posterior cruciate ligaments; plus six more ligaments and tendons. Model Size: 2" x 3.5" x 7". With key card and base.



LFA #9051 Canine Knee, Set of 4

Set of four (4) life-size models illustrate degenerative joint disease (Osteoarthritis) in the canine knee. Disease-free (normal) knee also includes additional important structures including ligaments, tendons and patella. The progressive degeneration of the articular surfaces and the development of osteophytes (bone spurs) are demonstrated in the other three (3) models. With key card and base.



LFA #9060 Canine Hip/Pelvis

Canine pelvis features both normal and osteoarthritic bone, body of ilium, greater trochanter, acetabulum, herniated disc, neck of femur, nerve, sacrum, and third trochanter. Model Size: 7" x 5.5" x 11". With key card and base.



LFA #9070 Canine Elbow

Healthy left elbow of average size canine includes: humerus, radius and ulna bones, plus 6 ligaments. Model Size: 9.5" x 1.75" x 7.5". With key card and base.



(Close up- medial view)

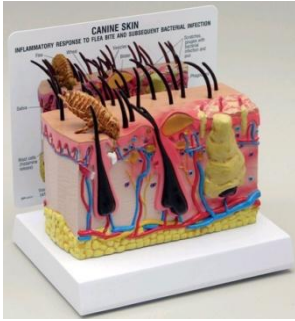
LFA #9075 Canine Shoulder

Average size dog shoulder with scapula, humerus, biceps brachii tendon, coracobrachialis tendon, lateral glenohumeral ligament, medial glenohumeral ligament and transverse humeral ligament. Model Size: 11.12" x 3" x 2". With key card and base.



LFA #9080 Canine Spine

Vertebral column of average size canine features 5 lumbar vertebrae and discs, caudal (tail) vertebrae and sacrum. Model Size: 8" x 2" x 2". With key card and base.



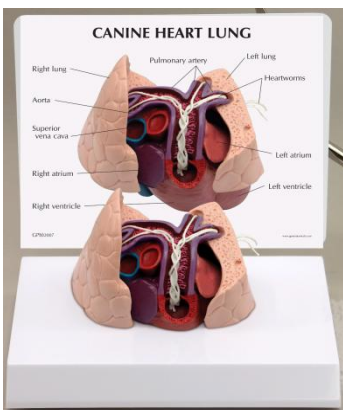
LFA #9090 Canine Skin with Flea

Enlarged cross section of canine skin. One-side features normal skin anatomy extending from the epidermis down to the layer of subcutaneous fat. Side two demonstrates the progressing changes of a fleabite from wheal to infected pustule. Model size: 5 3/4 " x 4 1/2" x 3". With key card and base.



LFA #9150 Canine Heart w Heartworm

Cutaway view of an average size dog heart containing heartworm parasites. Model Size: 3" x 3.5" x 4.25". With key card and base.



LFA #9151 Canine Heart and Lung Set

Average canine (dog) heart and lungs infested with heart worms (*dirofilaria immitis*). Cut-away view demonstrates structures in the heart (right ventricle, pulmonary truck, pulmonary arteries, and lungs) where adult-stages heart worms are normally found. With key card and base.



LFA #9190 Feline Jaw

Average size feline jaw depicts healthy teeth on the right side and diseased and damaged teeth on the left. The eight pathologies featured are: fractured canine, periodontal disease, tartar accumulation, plaque, gingivitis, worn incisors, retained deciduous tooth and missing pre-molar. Jaw opens and closes and separates for closer study.

Model Size: 2.75" x 2" x 1.125". With key card.



LFA #9191 Clear Feline Jaw

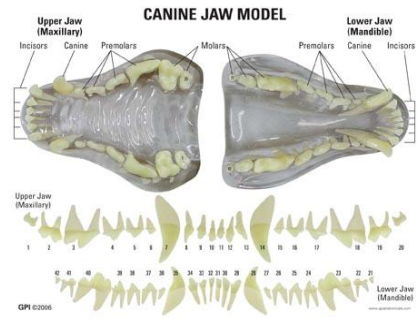
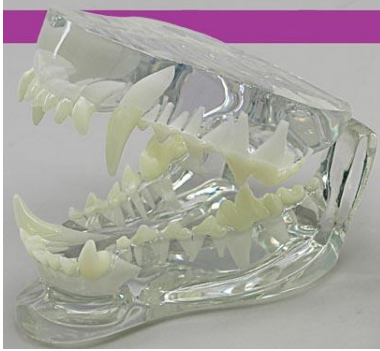
Healthy feline hinged jaw showing the roots of all teeth (incisors, canines, premolars, and molars). Can be separated for better viewing. Model Size: 2 3/4" x 2" x 1 1/8"



LFA #9195 Canine Jaw

Average size canine jaw depicts healthy teeth on the right side and diseased and damaged teeth on the left. The nine pathologies featured are: fractured canine, periodontal disease, tartar accumulation, plaque, gingivitis, worn incisors, retained deciduous tooth, gingival recession and missing pre-molar. Jaw opens and closes and separates for closer study.

Model Size: 4.75" x 2.75" x 2". With key card.



LFA #9196 Clear Canine Jaw

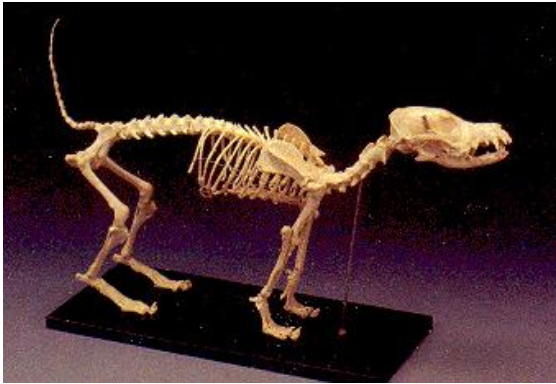
Healthy canine hinged jaw showing the roots of all teeth (incisors, canine, premolars, molars). Can be separated for better observation. Model size: 4 ¼" x 3" x 2". With key card.



LFA #9200 Canine Ear- Normal and Infected

This 2-sided, average size, canine ear depicts: Normal Side with cochlea, auditory ossicles, auditory tube, tympanic bulla, middle ear cavity, tympanic membrane, horizontal canal, vertical canal, auricular cartilage, pinna and temporalis muscle; Abnormal Side illustrates inflamed inner ear structures, inflammatory exudates in tympanic bulla, ear canal with partial occlusion from cellular hyperplasia, inflammatory exudates and an inflamed (reddened) outer ear. Model Size: 4.75" x 2.75" x 2". With key card.

Also available- our Exclusive Line of Complete Composite Plastic or “Real Bone” (Natural) Skeletons.



LFA #2015



LFA #2020

Plastic:

- | | |
|--|-----------------------|
| LFA #2015 Canine Skeleton, Standard Size- Complete | Model Size: 21” x 12” |
| LFA #2016 Large Canine Skeleton- Complete | Model Size: 49” x 23” |
| LFA #2020 Feline Skeleton- Complete | Model Size: 16” x 9” |
| LFA #2017 Large Feline Skeleton- Complete | Model Size: 27” x 12” |

All models feature a removable tail and skull with jaw on spring. Mounted on sturdy base.

Real Bone (Natural)

- LFA #51014 Real Bone Canine Skeleton
- LFA #51009 Real Bone Feline Skeleton
- LFA #51009 Real Bone Equine Skeleton*
- LFA #51010 Real Bone Bovine Skeleton*
- LFA #51013 Real Bone Pig Skeleton*
- LFA #51016 Real Bone Chicken Skeleton
- LFA #51017 Real Bone Bat Skeleton
- LFA #51018 Real Bone Rabbit Skeleton

Recommended for research or professional use where precise authentic details of the skeletal anatomy are required. All models on sturdy base (* wheeled) and/or enclosure.

Please visit our website at www.lakeforestanatomicals.com for complete information.

TRANSPARENT DENTAL SKULL MODELS

Clear durable urethane allows transparent 3-dimensional views of roots and teeth. Full skull accurately shows the anatomical shapes, positions and proximity of roots to eye sockets and nasal cavity. Explain needed dental procedures without struggling with pet's mouth or using real skull to demonstrate suggested treatment.

Enables the technician or assistant to learn the dental anatomy more easily and is excellent for lecturing, wet labs and teaching students. Injection molded teeth are extra strong, natural color and are anatomically correct. Teeth can be drilled and restored (with acrylic); Orthodontic devices, crowns and splints can be applied to the models for demonstration purposes.



LFA #2515



LFA #2518



LFA #2516

Includes:

LFA #2515 Transparent Canine Skull

LFA #2516 Transparent Feline Skull

LFA #2518 Transparent Pug Skull (Differentiates brachycephalic dentition)

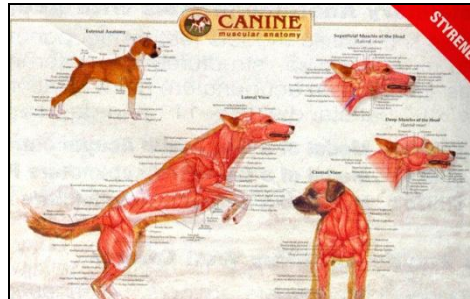
Veterinary Charts

We are pleased to offer a broad line of professional veterinary anatomical charts including:



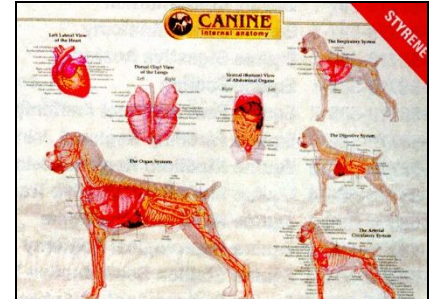
LFA #9 2515

Canine Skeletal Anatomy



LFA #92520

Canine Musculature Anatomy



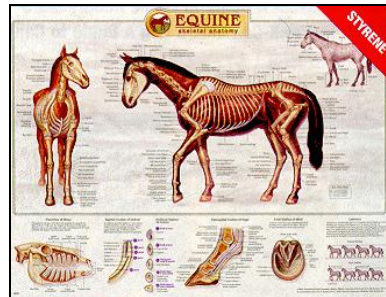
LFA #92525

Canine Internal Anatomy



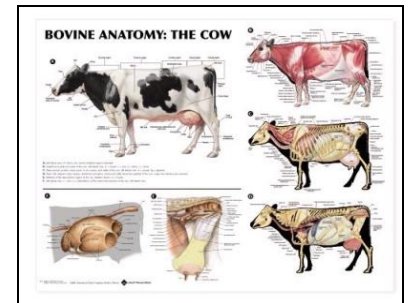
LFA #92530

Feline Skeletal Anatomy



LFA #92535

Equine Anatomy



LFA #99014

Bovine Anatomy

Equine Charts Series (12): (Available as a Set LFA #2559SX)

LFA #2536 Equine Surface Anatomy

LFA #2537 Equine Conformation

LFA #2538 Equine Dental Anatomy

LFA #2539 Equine Digestive Anatomy

LFA #2540 Equine Foot and Hoof Anatomy

LFA #2541 Equine Forelimb Regional Joint Anatomy

LFA #2542 Equine Hindlimb Regional Joint Anatomy

LFA #2543 Equine Foaling

LFA #2544 Equine Guide to Horses

LFA #2545 Equine Horse Information

LFA #2546 Equine Horsemen's English/Spanish

LFA #2547 Equine Mare Reproductive

LFA #2548 Equine Navicular Syndrome

LFA #2549 Equine Neurological

LFA #2550A Equine Stallion Anatomy

EXAMPLES:

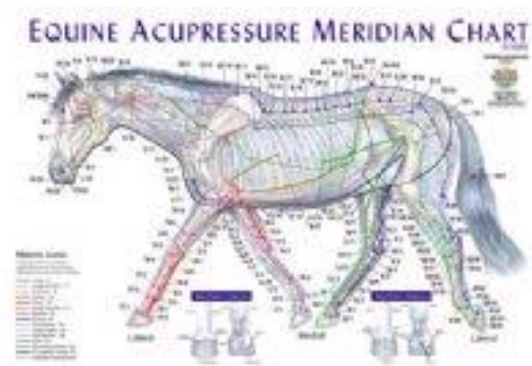
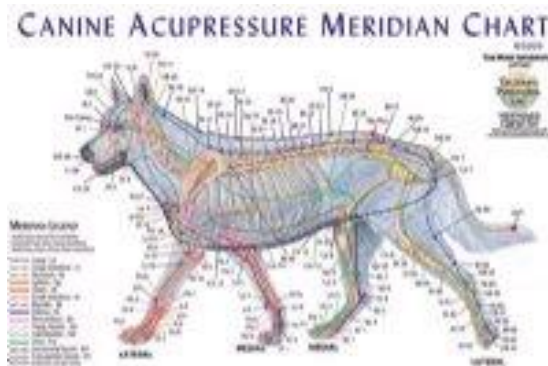


LFA #2540

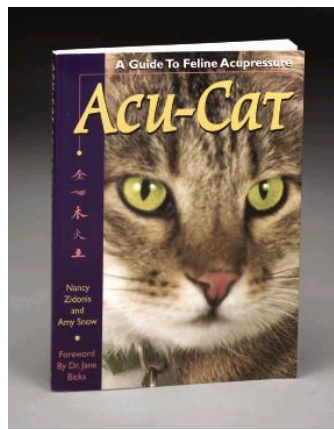


LFA #2548

Also, Veterinary Acupuncture and Acupressure models, charts and manuals



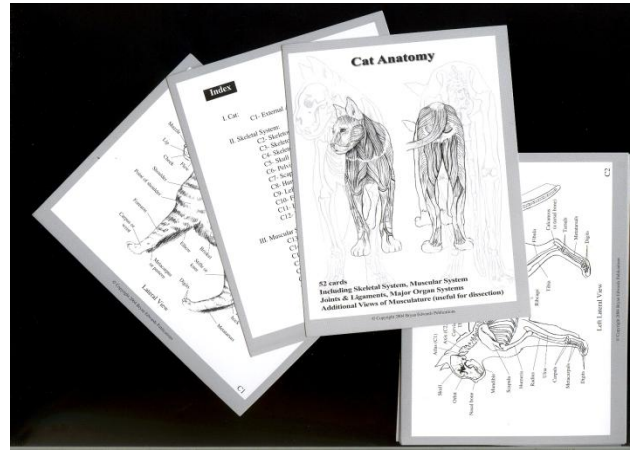
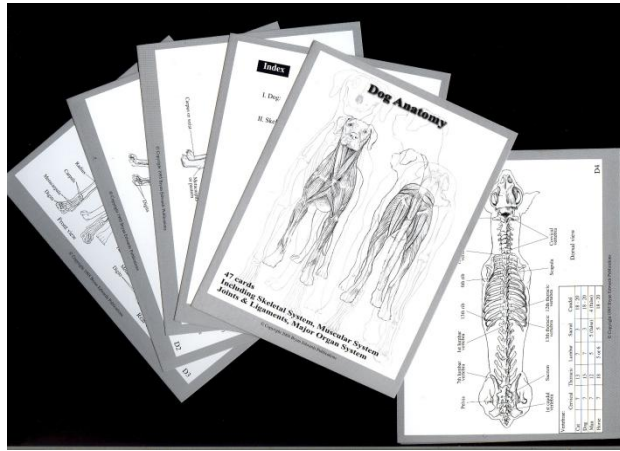
Canine and Equine Acupressure Charts and Manuals



LFA #92527 Feline Acupressure Manual

VETERINARY ANATOMICAL FLASHCARDS

Ideal for the student, veterinary technician or assistant. Use in professional practice, educational facility, etc. Quantity discounts available.



LFA #2022 Canine and LFA #2023 Feline Anatomy Flash Cards

Order directly online and SAVE 5% on each order! To order, please visit our webstore at www.lakeforestanatomicals.com to view our complete line of veterinary models, charts and related products. Use Coupon Code shown on Home Page for your 5% discount. Or, use the handy **Fax Back Order Form** attached for fax ordering.

E-Mail: _____

Bill To Address: Name: _____ **Title:** _____

Practice/Institution: _____ **Dept:** _____ **Mail #:** _____

Address _____

City: _____ **ST/Prov:** _____ **Zip/P.Code:** _____ **Country** _____

Credit Card #: _____ **CVV #** _____

VISA: _____ **MasterCard:** _____ **AMEX:** _____ **Expiration Date:** ____/____

Or Call 1-847-234-7367 for Verbal Credit Card Information

Comments: _____

Thank You,

Lake Forest Anatomicals

Terms: Corporate and Professional Purchase Orders welcome. Net 30 Days. We accept VISA, MasterCard, Paypal (E-Bay), American Express, Check or Money Order. Send Paypal payments to: sales@lakeforestanatomicals.com. ALL LAKE FOREST ANATOMICAL PRODUCTS SHIPPED WITHIN 48 HOURS OF RECEIPT OF PAYMENT. Satisfaction guaranteed or return for full credit. Quantity discounts available.