



Lake Forest Anatomicals, Inc.

Specialists in Quality Cardiovascular/Cath Lab Training Models
for Medicine, Research and Education

1400 S. Skokie Hwy, Suite #1005

(ALL Mail to: P.O. Box 503) Lake Forest, IL 60045 USA

Tel: 847-234-7367

Fax: 847-234-3559

mail@lakeforestanatomicals.com

www.lakeforestanatomicals.com



2012 Cardiology/CathLab Catalog

Hello! We are **Lake Forest Anatomicals, Inc.** offering a broad line of anatomically accurate, 3-dimensional **Angiogram Sam®** cardiovascular models and related products for use in Cardiology, Cardiovascular Research, Interventional Cardiology, EP/Cath Lab and Professional Staff Education.

Our unique “**Angiogram Sam®**” Family of Research and Interventional Cardiology and Cath/EP Laboratory Models are made of transparent cyro-acrylic plastic and include the following models: (See diagrams)

Angiogram Sam® Family of Models:

- * Angiogram Sam* LFA #5000
- * Angiogram Sam Plus (Extended Carotids) LFA #5001
- * Carotid Charlie LFA #5002
- * Pacemaker Pete LFA #5005
- * Venous Sam LFA #5010
- * Femoral Fred LFA #5015
- * Super Sam (Bilateral - Venous/Arterial) LFA #5020
- * Angiogram Sam w Radial Artery LFA #5101
- * Angiogram Sam Plus w Radial Artery LFA #5102
- * Pediatric Sam LFA #5017

And, the new IM/CABG Coronary Graft Models:

- * Angiogram Sam I.M. CABG X3 LFA #5110
- * Angiogram Sam I.M. CABG X2 LFA #5111
- * Angiogram Sam Plus I.M. CABG X3 LFA #5210
- * Angiogram Sam Plus I.M. CABG X2 LFA #5211

Most models complete with display stand for procedural demonstration. *Note: use of our hard-shell custom **Carrying Case, LFA #5021** for Angiogram Sam, is recommended for secure inter-departmental transport and air travel.

We also offer **custom design** glass models of the human cardio-vascular system and other organs for medical or industrial research (stents, pacemakers, grafts) and professional education incorporating precise replicas of the arterial or venous systems, coronary arteries (with or without constrictions), carotids, and **CABG graft models**. Please ask for a quotation.

Canadian and International Customers welcome! Order Directly Online at www.lakeforestanatomicals.com and save 5%! Qualified professional or institutional purchase orders accepted. We also accept Paypal (E-Bay), VISA, MasterCard, Discover, ACH Direct Bank Transfers, personal checks or money orders. Simply scan our QR Code below, fax back our convenient **Fax Back Order Form** attached, or email us for more information.

Sincerely,
Lake Forest Anatomicals

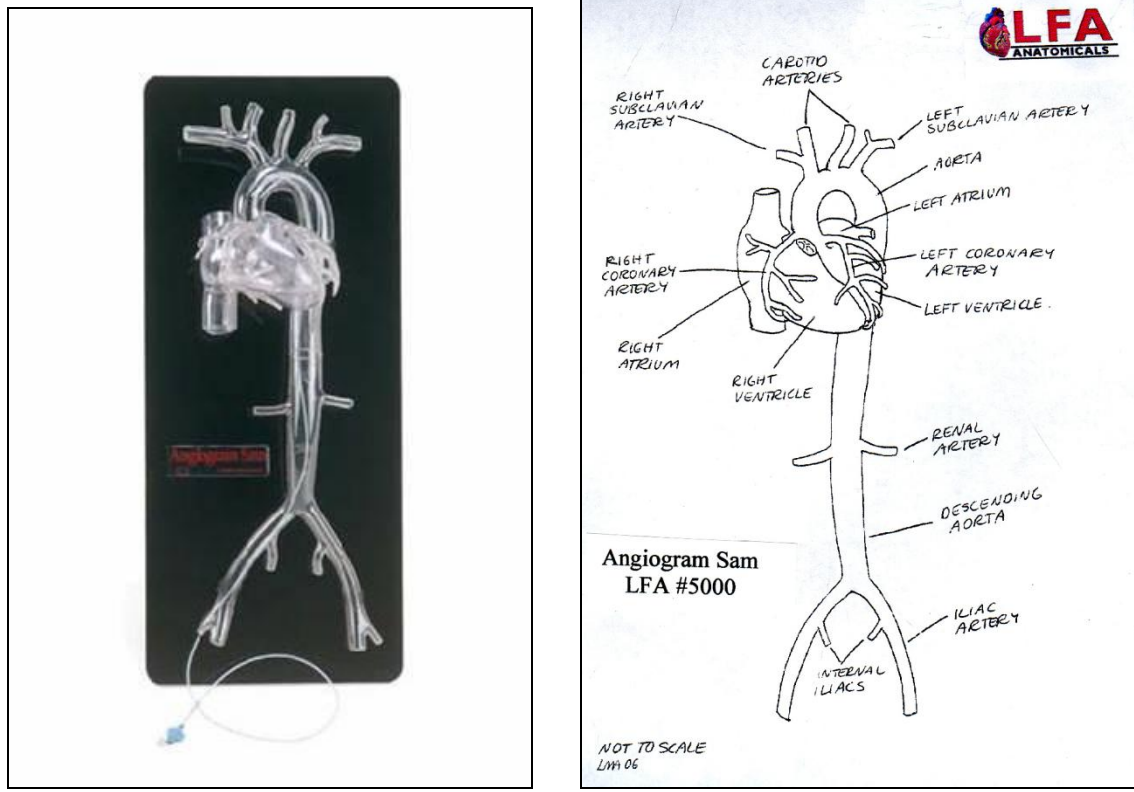
© Copyright 2012

Scan the Code below with Smart Phone APP “Mobile Tag” or equivalent to go directly to our webstore to order directly online.



Cardiovascular Training Models

1. ANGIOGRAM SAM Angioplasty Training Model LFA #5000:



Item Details: Life-size reproduction in durable clear plastic with smooth, hollow passageways to allow the tracking and deployment of trans-luminal cardiovascular catheters, stents, and guide wires. Four-chambered heart mounted to aorta allowing for standard pigtail placement. Arterial system with left and right coronaries, ascending and descending aorta, left and right subclavians, common carotids, and bilateral iliacs with femoral ports. Anatomical bifurcations and curvature. X-ray imageable. Plexiglas base allows for supine, RAO and LAO positioning.

ANGIOGRAM SAM is the realistic upper cardiovascular anatomy of a healthy 5 ft 8 in adult male of 180 lb. The dimensions were computed after cadaver studies of over 100 specimens and angiographic data of over 1,000 patients. The internal diameter (I.D.) of the aorta and coronaries represent healthy intima. The left anterior descending artery and the left

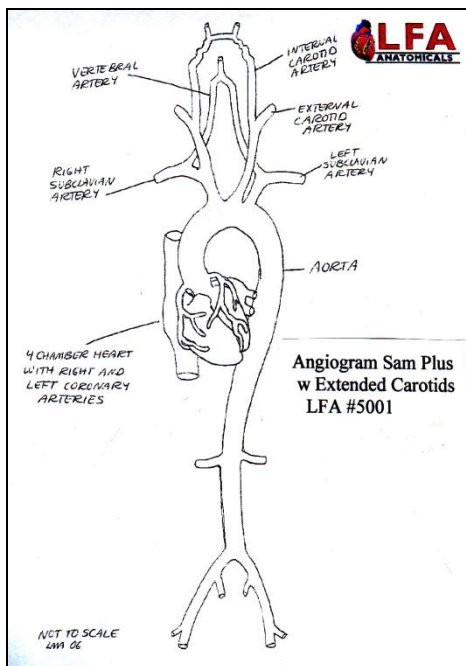
circumflex artery have the lumens enlarged to allow the practice of second-generation devices. Made of a durable, clear plastic material or glass, accurately designed to represent the major cardiovascular structures as described above. Base allows for supine, RAO and LAO positioning.

Normal and Intended Use:

ANGIOGRAM SAM is intended to improve angioplasty related techniques including guiding catheters, guide wires, or balloon catheters. It also provides an unparalleled visual image and understanding for angiography or related invasive interventional procedures. ANGIOGRAM SAM cannot substitute for the true clinical experience but may improve final outcomes by allowing inexperienced practitioners a non-threatening practice venue.

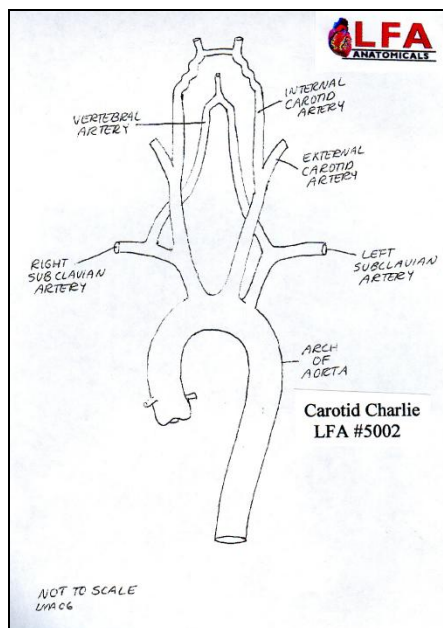
ANGIOGRAM SAM is designed to provide a level of clinical challenge similar to that encountered in the cardiac catheterization laboratory such as difficulty in turning the right catheter or maintaining the proper guiding position.

2. ANGIOGRAM SAM PLUS Angioplasty Training Model LFA #5001:



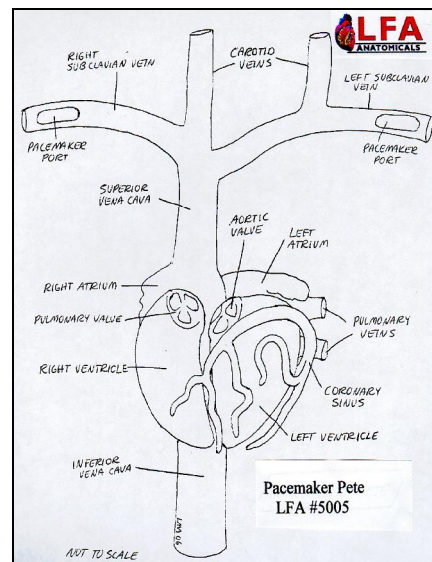
Item Details: Same as Angiogram Sam with Extended Carotid Arteries.

3. CAROTID CHARLIE - Angioplasty Training Model- LFA #5002:



Item Details: Upper Arterial Vascular System including Internal and External Carotid Arteries.

4. PACEMAKER PETE - Angioplasty Training Model- LFA #5005:



Item Details: "PACEMAKER PETE " is the realistic upper cardiovascular anatomy of a healthy 5 ft 8 in adult male of 180 lb. The dimensions were computed after cadaver studies of over 100 specimens and angiographic data of over 1,000 patients. The ID ϕ s of the upper venous and coronary sinus represent healthy intima.

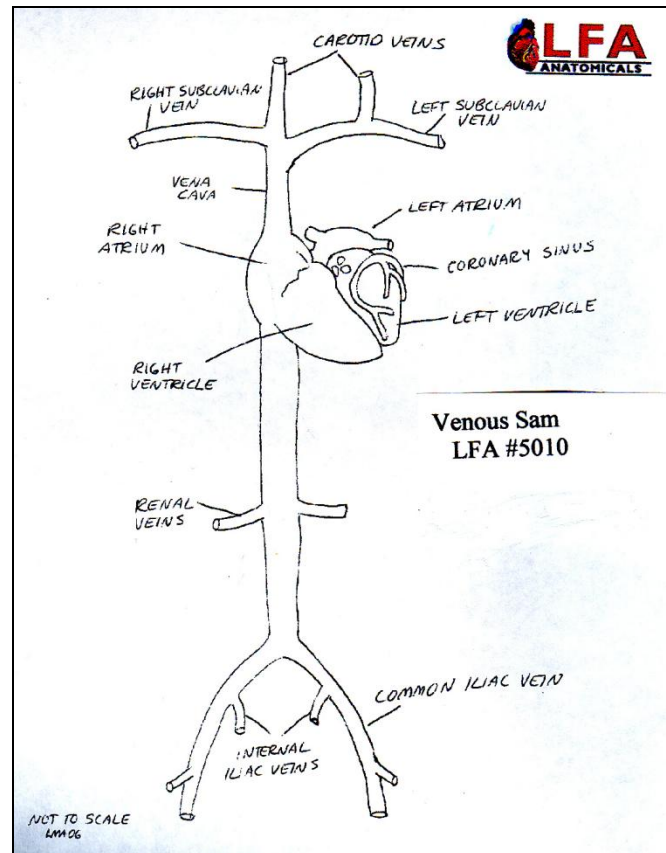
Normal and Intended Use:

PACEMAKER PETE is designed to provide a level of challenge similar to that encountered in the cardiac catheterization laboratory, such as difficulty in turning the catheter, or maintaining position. After multiple attempts, PACEMAKER PETE is

intended to improve invasive techniques including pacemaker leads and EP catheters. It also provides an unparalleled visual understanding and feeling for angiographic positioning for most interventional procedures.

PACEMAKER PETE cannot replace the real experience but may improve final outcomes by allowing inexperienced practitioners a non-threatening practice venue, and by challenging experienced operator skills and their spatial understanding. Normal use implies that luminal catheters are inserted using wires with stiff guiding lumen catheters. The coronary sinus is designed for all leads and EP catheters.

5. VENOUS SAM - Angioplasty Training Model- LFA #5010:



Item Details: "VENOUS SAMö is the realistic upper cardiovascular anatomy of a healthy 5 ft 8 in adult male of 180 lb. The dimensions were computed after cadaver studies of over 100 specimens and angiographic data of over 1,000 patients. Made of a durable, clear plastic material or glass, accurately designed to represent the major cardiovascular structures as described above.

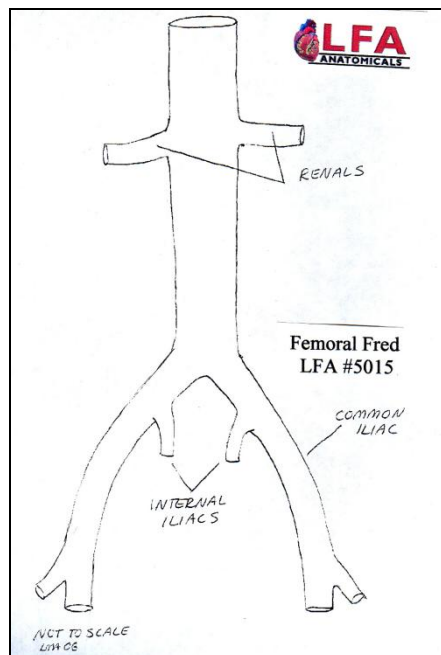
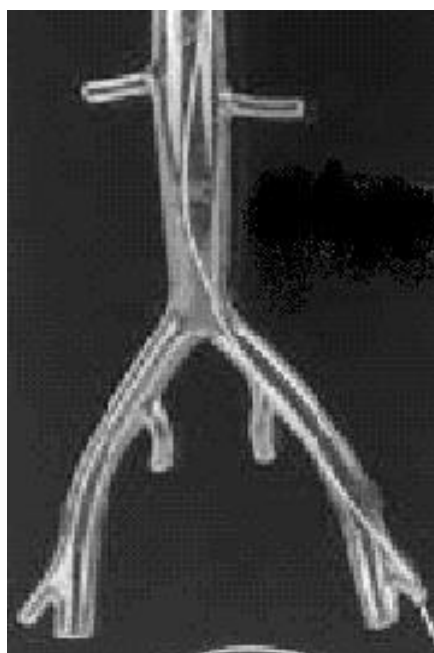
The ID ϕ s of the upper/lower venous and coronary sinus represent healthy intimae. The coronary sinus lumens are internally strong to allow the practice of multiple devices.

Normal and Intended Use: VENOUS SAM is designed to provide a level of challenge similar to that encountered in the cardiac catheterization laboratory, such as difficulty in turning the catheter, or maintaining position. After multiple attempts, VENOUS SAM is intended to improve invasive techniques including pacemaker leads, EP catheters, transeptal guide wires,

and valvuloplasty balloon catheters. It also provides an unparalleled visual understanding and feeling for angiographic positioning for most interventional procedures.

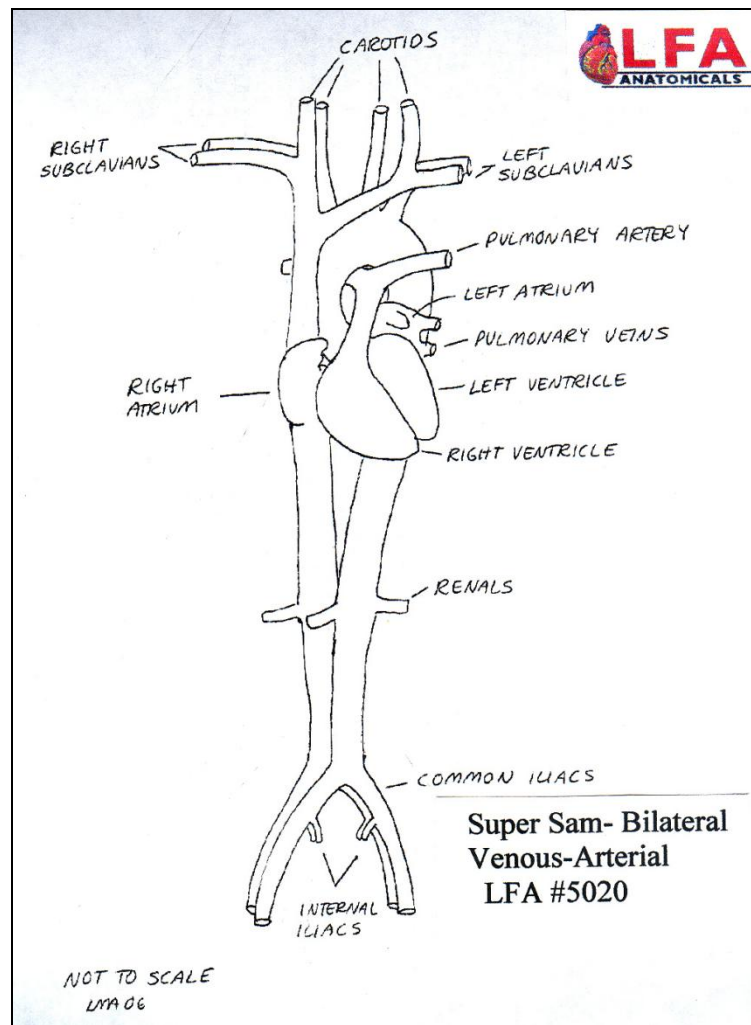
VENOUS SAM cannot replace the real experience but may improve final outcomes by allowing inexperienced practitioners a non-threatening practice venue, and by challenging experienced operator skills and their spatial understanding. Normal use implies that luminal catheters are inserted using wires with stiff guiding lumen catheters. Swan and femoral pacers can be introduced as normally prescribed. The coronary sinus is designed for all leads and EP catheters.

6. FEMORAL FRED - Angioplasty Training Model- LFA #5015:



Item Details: "FEMORAL FREDö is the realistic lower cardiovascular anatomy of a healthy 5 ft 8 in adult male of 180 lb. The dimensions were computed after cadaver studies of over 100 specimens and angiographic data of over 1,000 patients. Made of a durable, clear plastic material or glass, accurately designed to represent the major cardiovascular structures as described above.

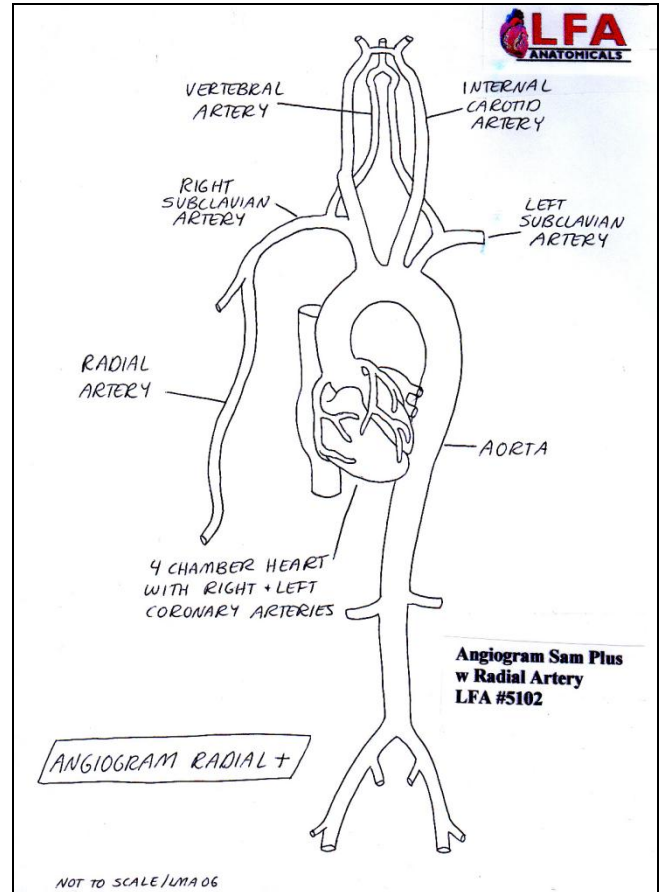
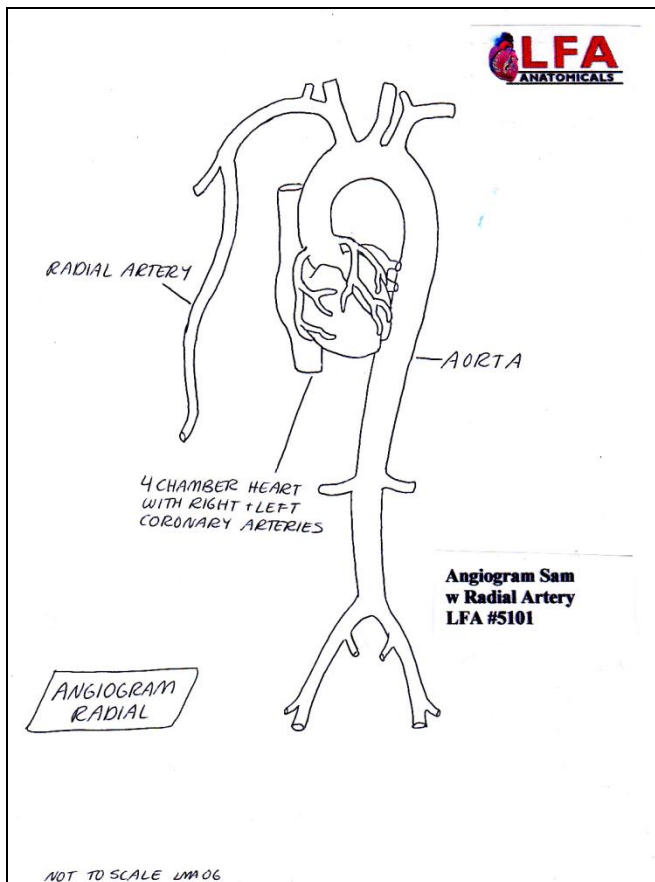
7. SUPER SAM ó Bilateral Venous-Arterial Training Model- LFA #5020:



Item Details: "SUPER SAM" is a UNIQUE Bilateral venous and arterial cardiovascular model of a healthy 5 ft 8 in adult male of 180 lb. The dimensions were computed after cadaver studies of over 100 specimens and angiographic data of over 1,000 patients. Made of a durable, clear plastic material or glass, accurately designed to represent the major cardiovascular structures as described above.

8. ANGIOGRAM SAM WITH RIGHT RADIAL ARTERY- Arterial Training Model- LFA #5101:

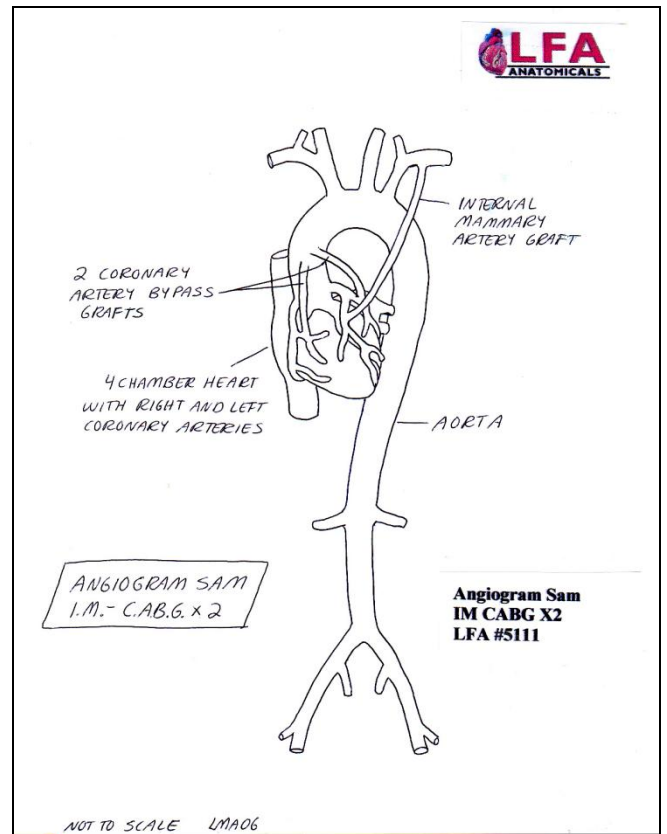
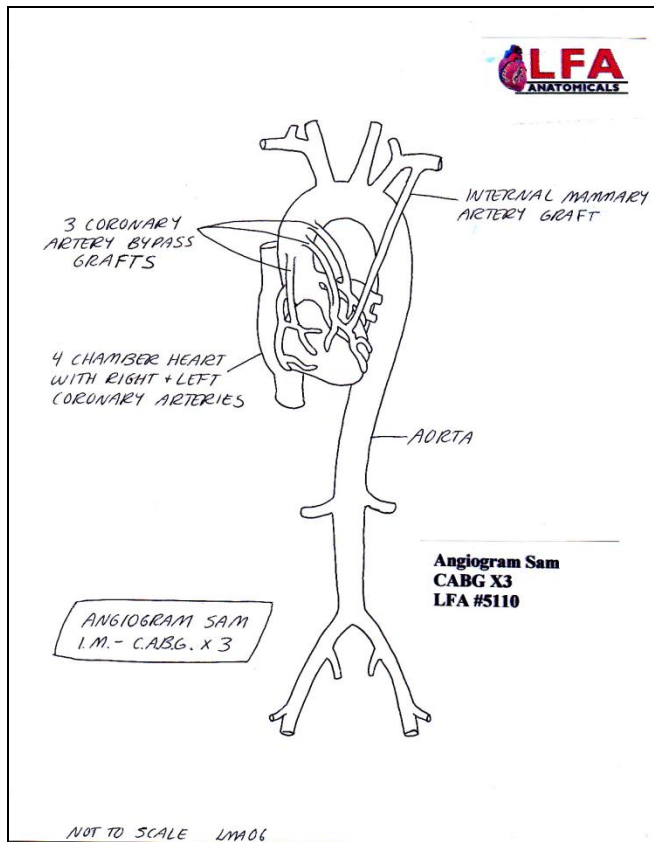
9. ANGIOGRAM SAM PLUS WITH RIGHT RADIAL ARTERY- Arterial Training Model- LFA #5102:



Item Details: "Angiogram Sam or Angiogram Sam Plus with Right Radial Artery cardiovascular model of a healthy 5 ft 8 in adult male of 180 lb for Sones procedure.

10. ANGIOGRAM SAM I.M. CABG X3 Training Model- LFA #5110:

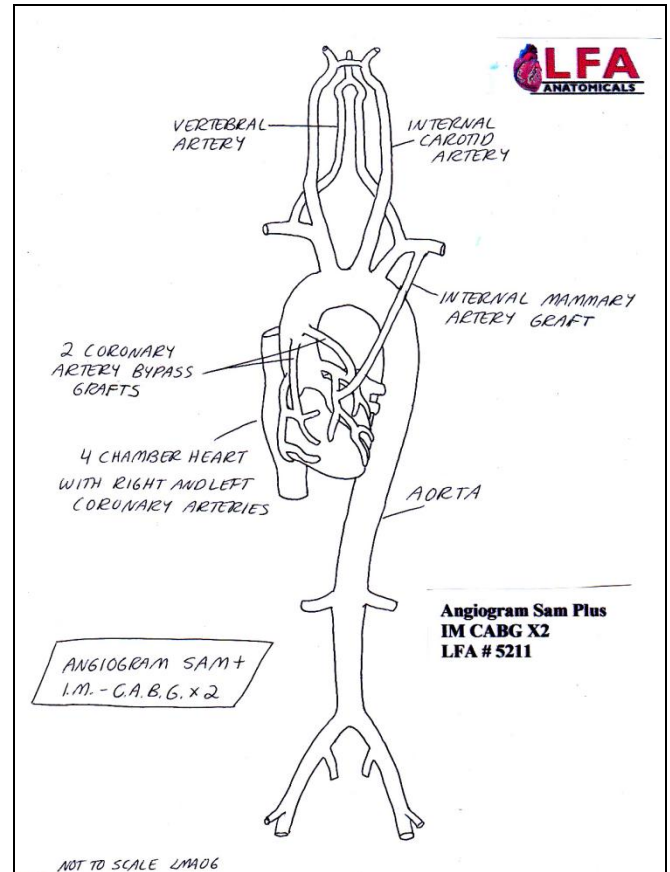
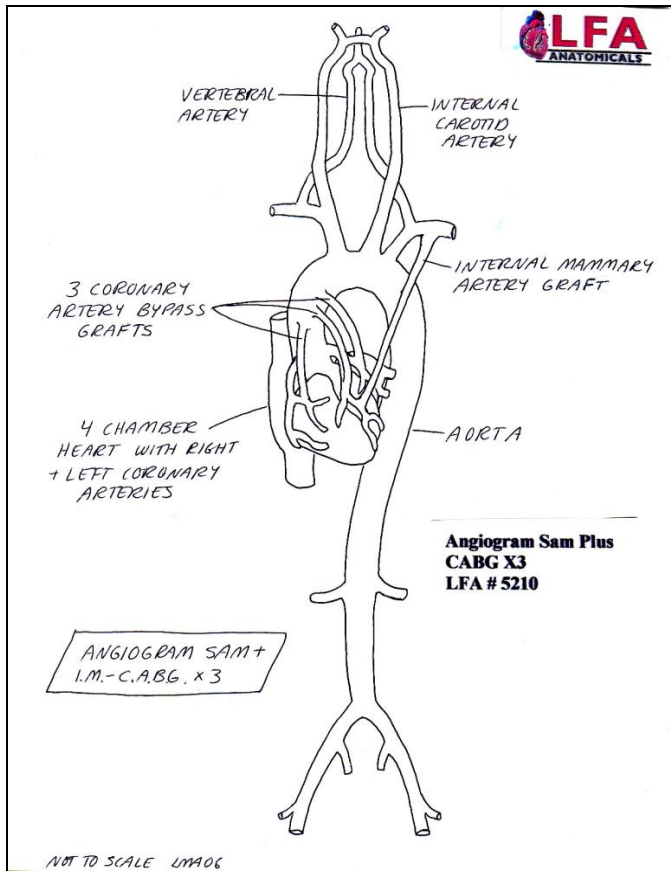
11. ANGIOGRAM SAM I.M. CABG X2 Training Model- LFA #5111:



Item Details: "Angiogram Samö with Internal Mammary Artery Graft and either 2 or 3 Coronary Bypass Grafts.

12. ANGIOGRAM SAM PLUS I.M. CABG X3 Training Model- LFA #5210:

13. ANGIOGRAM SAM PLUS I.M. CABG X2 Training Model- LFA #5211:

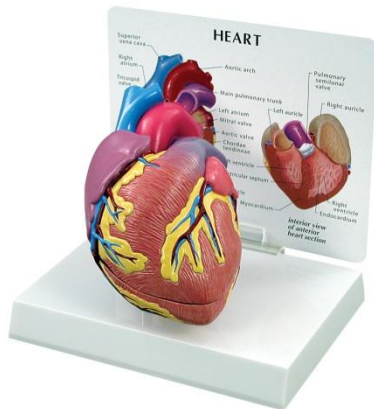


Item Details: "Angiogram Sam Plusö with Internal Mammary Artery Graft and either 2 or 3 Coronary Bypass Grafts.

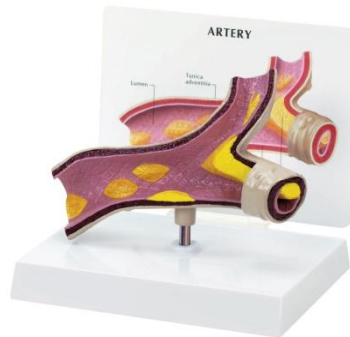
Note to Medical Center, OEM R&D and Health Device Marketers: Clear plastic or glass 3-dimensional models are ideal for Clinical training, R&D, clinical research, trade shows, customer demonstrations or professional training. Custom glass models also available. Please call or email for quotation.

B. Anatomical Organ Models - Cardiovascular

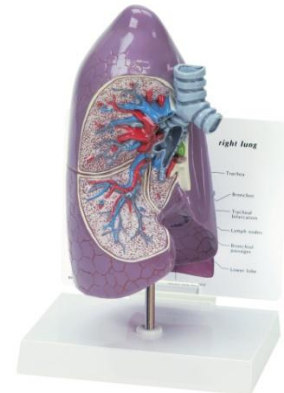
We also carry a wide range of heart and related cardiovascular organ system models and wall charts. Please visit our webstore at www.lakeforestanatomicals or E-Bay Webstore to view the complete line for cardiology.



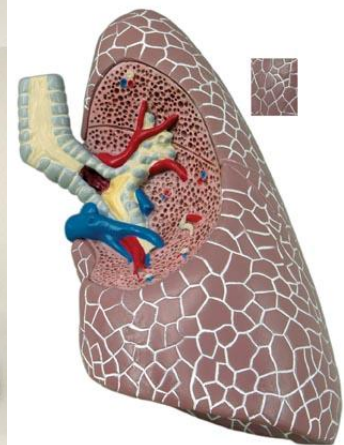
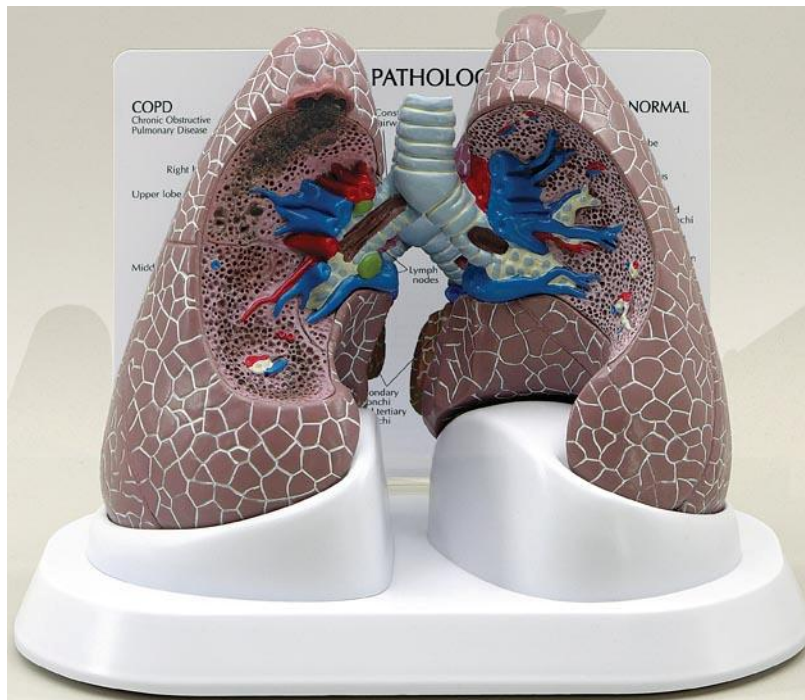
LFA #2500 Heart



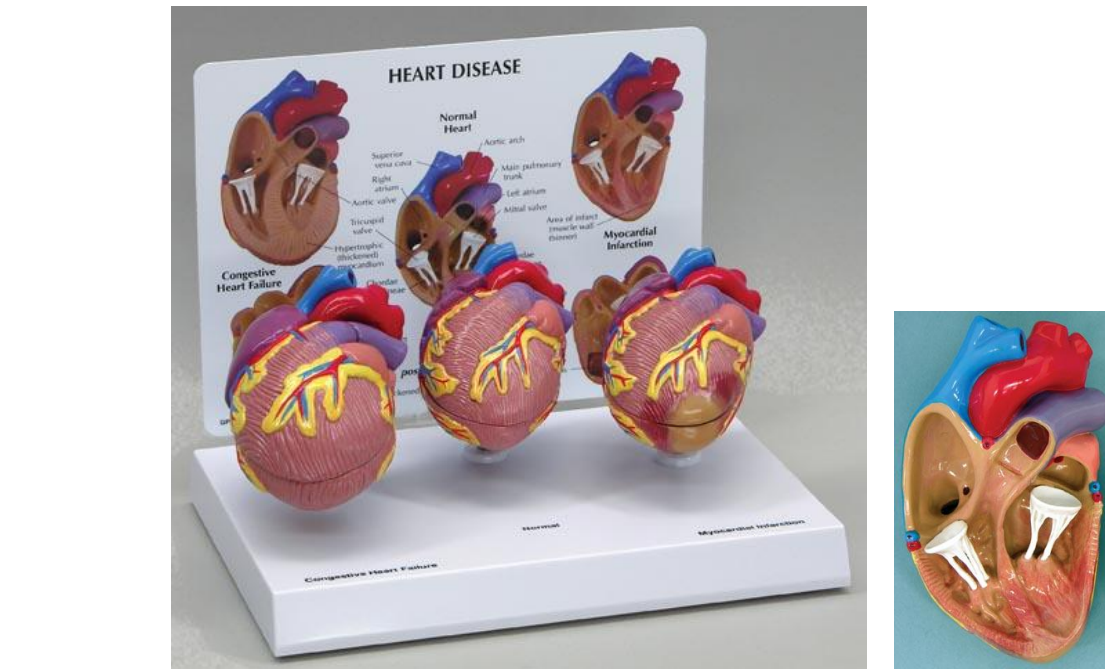
LFA #2600 Artery



LFA #3100 Lung



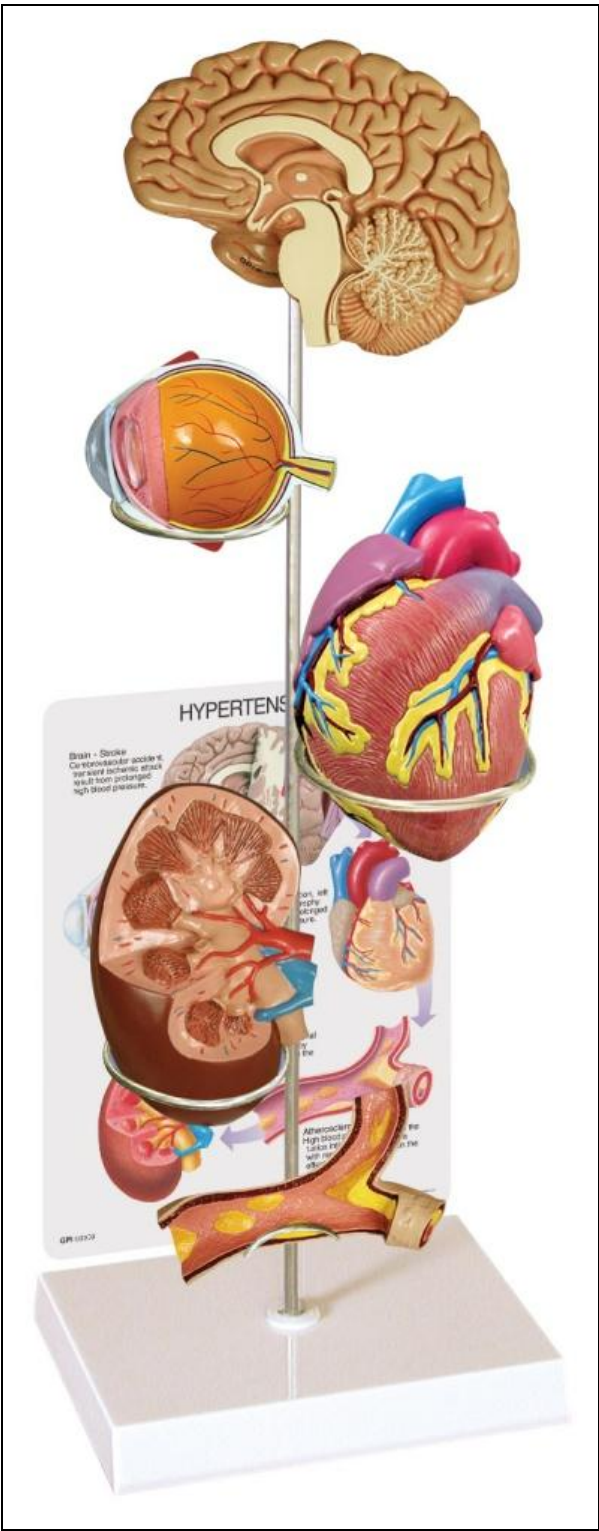
LFA #3100 Lung Model- COPD, Asthma, Cancer



LFA #2550 3-Mini Heart Set including Normal, Infarcted, and Congestive Heart Models

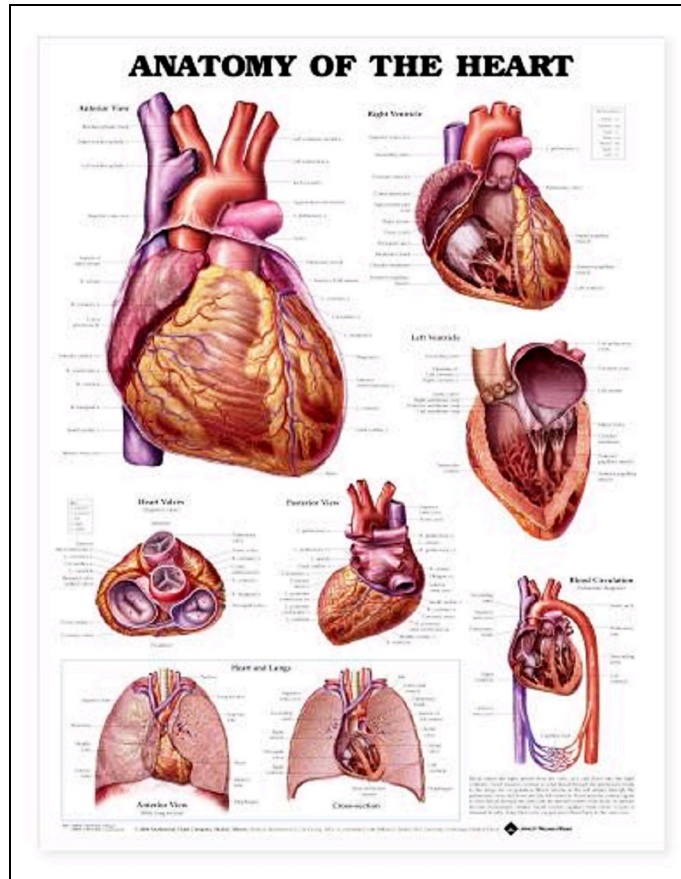


LFA #2700 4-Pc Artery Set - Showing Progressive Blockage

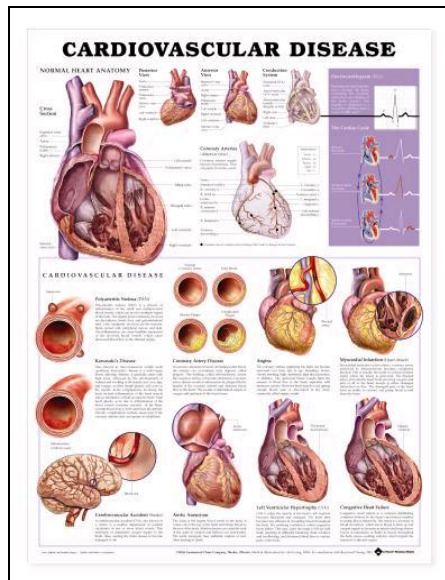


LFA #4000 Hypertension System Model Set

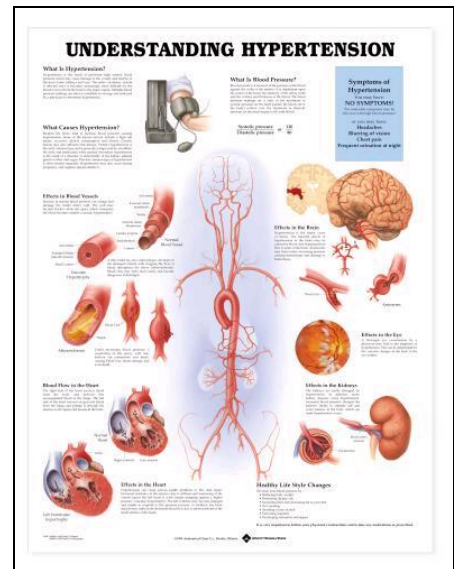
Here are a few on the many anatomically accurate Cardiovascular Wallcharts available that will supplement the use of our anatomical models:



LFA #99878 Anatomy of the Heart Wall Chart



LFA #99915 Cardiovascular Disease



LFA #99798 Understanding Hypertension

Lake Forest Anatomicals, Inc.

1400 S. Skokie Highway #1005 ALL Mail to: P.O. Box 503 Lake Forest, IL 60045

Tel: 1-847-234-7367 Fax: 1-847-234-3559

E-mail: mail@lakeforestanatomicals.com

Website: www.lakeforestanatomicals.com

ORDER FORM

Date: _____

Check One: Check/MO Bill P.O.# _____ Credit Card

(Call 1-847-234-7367 to verbally provide C/C Numbers for added security)

Check One: VISA MasterCard Discover AMEX Expiration mm/yy __/__

Credit Card #: _____ CVV # _____

Name: _____ Title: _____

Company or Institution: _____ Dept: _____ Mail #: _____

	<u>Quantity</u>	<u>LFA#</u>	<u>Description</u>
1.	_____	_____	_____
2.	_____	_____	_____
3.	_____	_____	_____
4.	_____	_____	_____
5.	_____	_____	_____
6.	_____	_____	_____

Bill To Address: _____

Ship To Address: _____

City: _____ ST/Prov: _____ Zip/P.Code: _____

Country: _____

Tel: () - - Fax: () - -

E-Mail: _____

Comments or Special Instructions:

Thank You, Lake Forest Anatomicals

Terms: Net 30 Days. Institutional and Professional Purchase Orders welcome. We accept VISA, MasterCard, Discover, Paypal (E-Bay), American Express, ACH wire transfers, Check or Money Order. Call to provide Credit Card number by phone for added security. ALL LAKE FOREST ANATOMICAL PRODUCTS SHIPPED WITHIN 48 HOURS OF RECEIPT OF PAYMENT. Satisfaction guaranteed or return for full credit. Quantity discounts available. E-mail us at mail@lakeforestanatomicals.com for more information.